

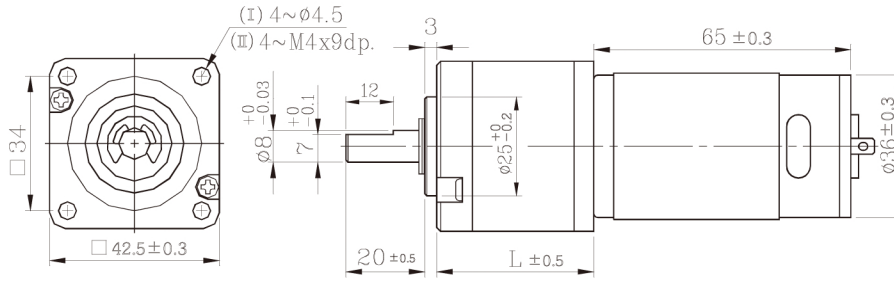
# JCI-43GM 01&02 TYPE



엔코더 장착 가능 51Page 참고

- 사용 습도(Operating relative humidity) : 20% ~ 85%
- 사용 온도(Operating temperature) : -10°C ~ +60°C

## 제품도면 (Dimension)



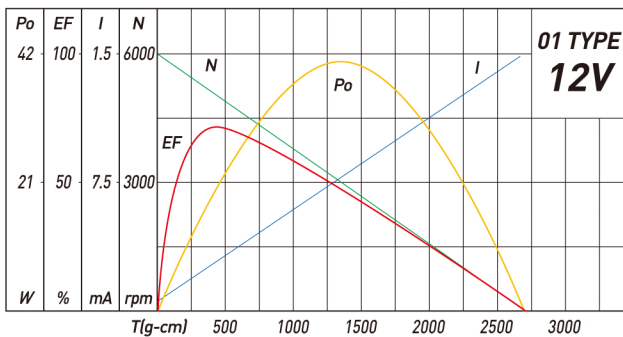
## 감속모터 사양 (Geared Motor Specification)

감속기 길이 (mm) Gear Head L		26.15				32.95				39.75				46.45						
감속비 Reduction ratio		1/4	1/14	1/17	1/24	1/49	1/61	1/84	1/104	1/144	1/212	1/294	1/504	1/624	1/720	1/864				
01 Type 12v	정격토크(kg-cm) Rated torque	1.0	3.0	3.6	5.2	9.2	11	15	19	20	25	25	30	30	30	30				
	정격 회전수(RPM) Rated speed	1250	363	293	212	103	83.5	60.5	49	38	25.4	18.9	11.2	8.8	8.0	6.5				
02 Type 24v	정격토크(kg-cm) Rated torque	0.9	2.6	3.1	4.5	8.0	10	14	17	20	25	25	30	30	30	30				
	정격 회전수(RPM) Rated speed	1290	375	302	218	107	86.5	62.5	50.5	39	26.2	18.8	11.2	8.8	8.0	6.5				

## 모터부 사양 (Install motor specification)

### 01Type Motor (DC 12v)

• 정격 토크 Rated torque	320	(gf-cm)
• 정격 회전수 Rated speed	5,090	(RPM)
• 정격 전류 Rated current	2,100	(mA)
• 무부하 회전수 No load speed	6,000	(RPM)
• 무부하 전류 No load current	350	(mA)
• 정격 출력 Rated output	17.09	(W)



### 01Type Motor (DC 24v)

• 정격 토크 Rated torque	280	(gf-cm)
• 정격 회전수 Rated speed	5,250	(RPM)
• 정격 전류 Rated current	900	(mA)
• 무부하 회전수 No load speed	6,000	(RPM)
• 무부하 전류 No load current	170	(mA)
• 정격 출력 Rated output	15.56	(W)

