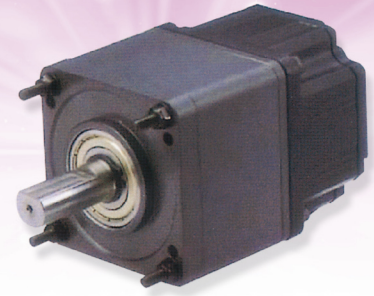
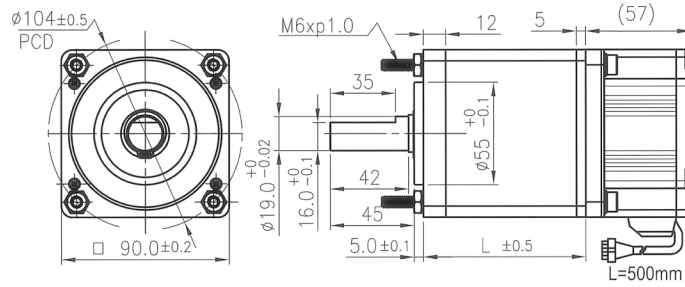


JCI-90WGM 41 TYPE



- 사용 습도(Operating relative humidity) : 20% ~ 85%
- 사용 온도(Operating temperature) : 0°C ~ +50°C

제품도면 (Dimension)



감속모터 사양 (Geared Motor Specification)

감속기 길이 (mm) Gear Head L		53.3			69.8			86.3			102.8								
감속비 Reduction ratio		1/4	1/15	1/19	1/52	1/60	1/77	1/98	1/201	1/294	1/403	1/517							
41 Type 24v	정격토크(kg-cm) Rated torque	11	40	52	125	143	150	150	180	180	180	180							
	정격 회전수(RPM) Rated speed	700	171	133	47	41.8	32.5	25.4	12	8.5	6.2	4.8							

모터부 사양 (Install motor specification)

41Type Motor (DC 24v)

• 정격 토크 Rated torque	4,000	(gf-cm)
• 정격 회전수 Rated speed	2,500	(RPM)
• 정격 전류 Rated current	6,000	(mA)
• 무부하 회전수 No load speed	3,000	(RPM)
• 무부하 전류 No load current	600	(mA)
• 정격 출력 Rated output	102.7	(W)
• 기동 토크 Start torque	5,000	(g-cm)
• 절연 내압 Insulation Voltage	60HZ	AC500V
• 절연 저항 Insulation resistance	100MΩ	DC500V
• 절연 등급 Insulation Class	A Class	(105 °C)
• 중량 Weight	1,300	(g)

Connected With Motor Driver

• 형식 Type	KBM90100KA
• 입력전압 Input Voltage	DC 24V±10%
• 속도범위 Speed Control Range	300~3,000 rpm
• 속도조절방식 Speed Control Way	1. 내부 컨트롤 2. 외부 속도 조절 3. 외부 전압 조절

